

# Sentinel Visualizer®

## Enhancements in Version 10

### Import Enhancements

Sentinel Visualizer supports huge datasets with Microsoft SQL Server. Getting your data into it is crucial. Version 10 enhances the Import features significantly.

#### New Import Wizard

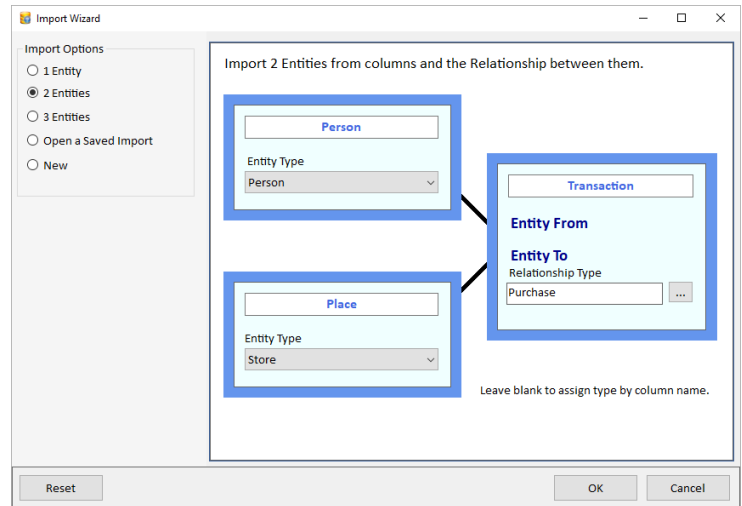
The Import Wizard simplifies new imports for:

- One entity
- Two entities and a relationship
- Three entities and two relationships

#### Additional Import Features

The Import Designer has many new features:

- Directly import from SQL Server tables
- Specify WHERE clause on Source Data to limit the records retrieved
- Preview data before importing it
- Import all entity and relationship columns including brief, image file, and lookups
- Use a unique ID to differentiate entities with the same name
- When an import encounters an existing record, specify fields to update, if any
- Assign values directly to columns rather than just Source Data columns
- When Source Data changes, column assignments are preserved
- New saved import file format includes Source Data to load data when it is opened

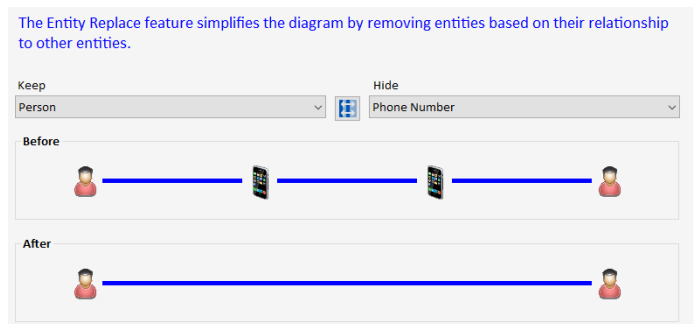


### Replace Entities

In the Visualizer Diagram, keep and hide entities based on entity and relationship types.

For instance, for phone call data, replace the phones with their owners to show the connection between the people rather than their phones.

Advanced features let you specify multiple types, save them, and layer multiple replacements.

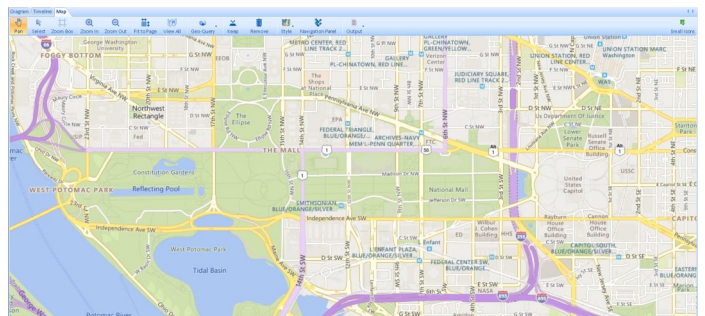


### Online Maps

Entities with latitude and longitude can be plotted on the Visualizer map.

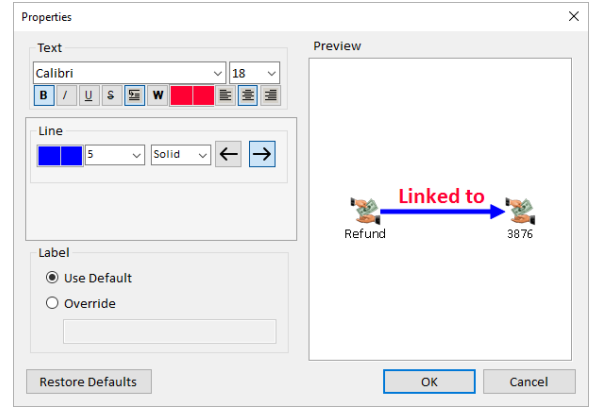
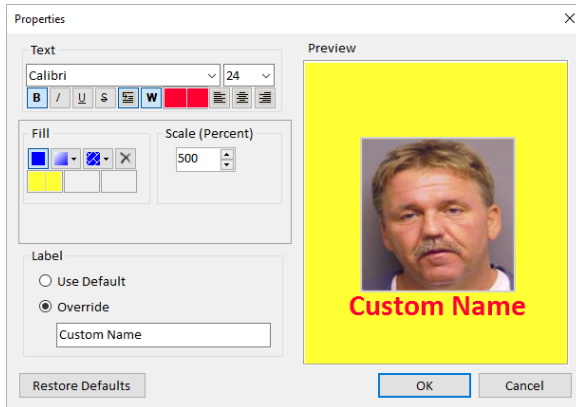
With an Internet connection, online maps from offer high resolution topography and road styles for any part of the world.

- Zoom in and out of your map
- Fit to Page adjusts the map to show all items.
- Perform Geo-Query in a circle or rectangle to add entities located in that region.



## Custom Entity and Relationship Properties and Labels

On the Visualizer, Entity and Relationship lines can be customized individually or by type with different fonts, colors, size, line widths, etc. Labels can also be customized to display information like Metadata value, metrics, dates, etc. Custom properties can also be saved for the entity, relationship and type.



## Entity Distance Search

Entity search finds entities based on its distance from a location.

Specify the distance in miles or kilometers, and the latitude and longitude of the center point. All entities with latitude and longitude in the circle are selected.

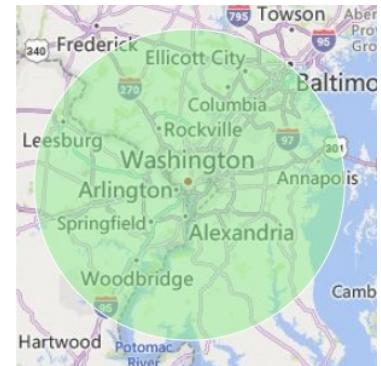
**Distance from Location**

Distance

Units

Latitude

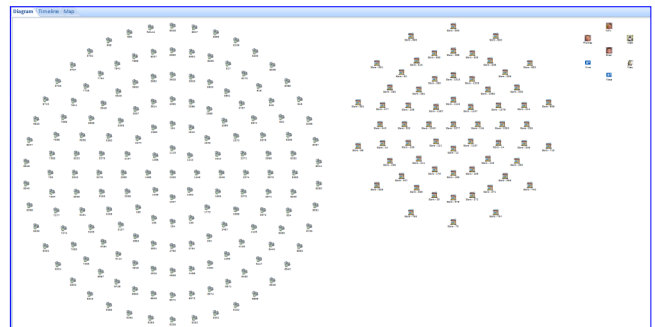
Longitude



## New Group by Entity Type Layout

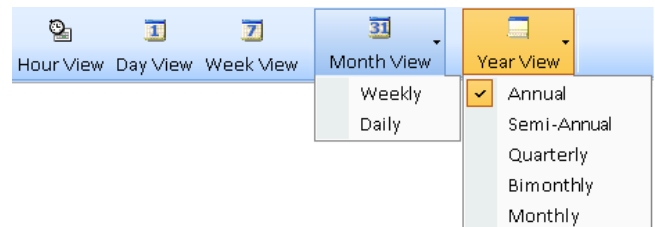
Layout automatically reorganizes the entities on the diagram. A new feature lets you easily see all the entities by entity type. Under Layout, a new [Group by Entity Type] item moves your entities into a variety of shapes for each entity type.

Each entity type is treated as a separate network arranged from largest to smallest, sorted by name within each type. For example, three entity types (transactions, stores, people) in concentric circles.



## Timeline Enhancements

The Visualizer's Timeline tab has new toolbar options for Month View and Year View to better control the width of time periods. Month has a new Daily option which is wider than the weekly option. Year has wider options for semiannual, quarterly, bimonthly, and monthly. Set the earliest and latest dates of the view. Improved handling of items with missing Start and End dates.



## Additional Enhancements

- Combine Multiple Searches
- Metadata Type and Wildcard Search
- Text Searches on Many Forms
- Redesigned Query Builder
- New 9500+ Icon File Library
- Home Page Enhancements
- Get Links by Direction
- ...and much more!

